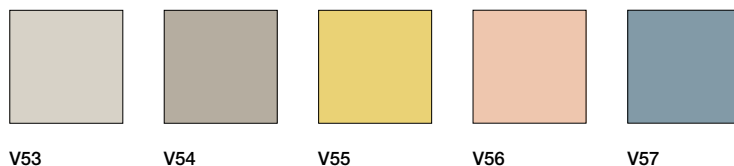
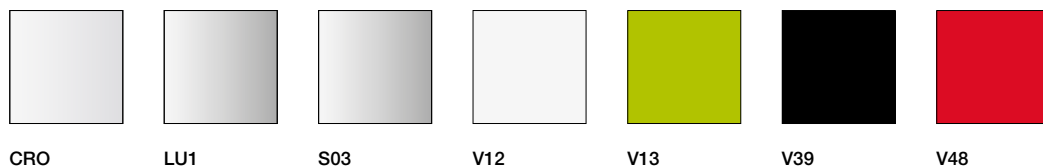


FINISHES

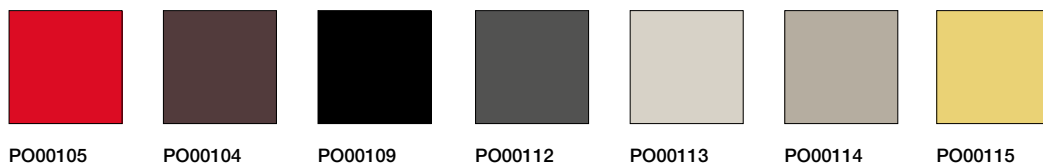
Finiture
Materialien
Finitions
Acabados

arper

Metalli
Metals
Métalle
Métal
Metal



Polipropilene monocolore
Polypropylene one colour
Polypropylen einfarbig
Polypropylène monocolore
Polipropileno monocolor



Polipropilene bicolore
Polypropylene two colors
Polypropylen zweifarbig
Polypropylène bicolore
Polipropileno bicolor



HPL



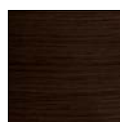
Legno
Wood
Holz
Bois
Madera



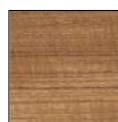
L0020



L0022



L0021



L0023

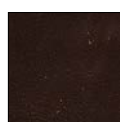
Cuoio
Hard leather grade 1
Kernleder
Cuir première qualité
Cuero



CU00033



CU00006

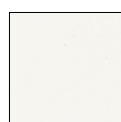


CU00026

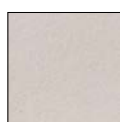


CU00001

Cuoietto
Hard leather grade 2
Leder zweiter Qualität
Cuir deuxième qualité
Cuero segunda calidad



CT00030



CT00031



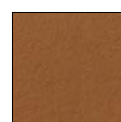
CT00070



CT00450



CT00029



CT00034



CT00120



CT00100



CT00090



CT00040



CT00110



CT00033



CT00020

Pelle
Soft leather
Weichleder
Cuir souple
Piel



PF00001



PF00002



PF00008



PF00010



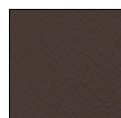
PF00003



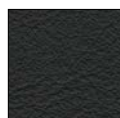
PF00004



PF00005



PF00006



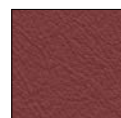
PF00007



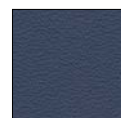
PF00009



PF00011



PF00012



PF00013



Ecopelle Valencia
Faux Leather Valencia
Kunstleder Valencia
Similcuir Valencia
Ecopiel Valencia

					
	VL00002	VL00020	VL00033	VL00034	VL00035
VL00001					
	VL01001	VL01020	VL01048	VL01049	VL01050
					
VL02001	VL02002	VL02020	VL02021	VL02062	VL02075
					
VL03001	VL03067	VL03068	VL03069	VL04001	VL04003
					
VL04020	VL04040	VL04041	VL04042	VL04043	VL04052
					
VL05001	VL05002	VL05041	VL05056	VL05057	VL06002
					
VL06003	VL06012	VL06013	VL06019	VL06020	VL08020
					
VL08032	VL09001	VL09035	VL090C02		

Arper grade
CHAIRS: B

Arper grade
SOFAS: A



CHROME FREE

ELMOSOFT è una pelle semi-anilina, morbida e flessibile. La sua morbidezza associata alla sua robustezza e ad una vasta gamma di colori disponibili rendono la pelle Elmosoft adatta ad un utilizzo nel contract. Punture di insetti e cicatrici visibili contribuiscono a valorizzare le caratteristiche di unicità ed eleganza di questa pelle.

ELMOSOFT is a soft and pliable Semi-Aniline leather. Outstanding comfort combined with excellent durability and an extensive shade card, makes it very suitable for the public environment. Visible insect-bites and scars from healed wounds add to the elegant quality of the leather.

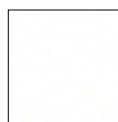
ELMOSOFT. Weiches, geschmeidiges Semi-Anilinleder, Ein sehr strapazierfähiges und im Griff komfortables Leder in reicher Farbauswahl, hervorragend geeignet für Objektausstattungen. Sichtbar erhaltene Insektenstiche und kleine vernarbte Wunden betonen die naturechte Eleganz.

Elmosoft est un cuir semi-aniline, souple et doux. Son confort élevé, associé à une grande robustesse et à une vaste gamme de coloris disponibles, le rend particulièrement indiqué pour les collectivités. Les piqures d'insectes et les cicatrices visibles contribuent à rehausser le caractère élégant du cuir.

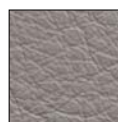
ELMOSOFT es una suave y flexible piel semianilina. Su destacable confort combinado con excelente durabilidad y una amplia carta de colores, la hacen muy adecuada para ambientes públicos. Picaduras de insectos visibles y cicatrices de heridas muestran la elegante calidad de la piel.



ES00100



ES00118



ES01003



ES01009



ES01021



ES01037



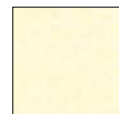
ES01040



ES01061



ES01085



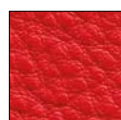
ES02085



ES02110



ES05007



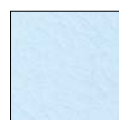
ES05011



ES06001



ES07008



ES07029



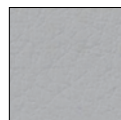
ES07075



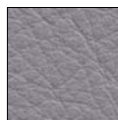
ES07080



ES08035



ES11033



ES11049



ES11073



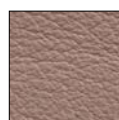
ES12080



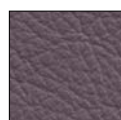
ES12105



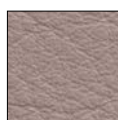
ES13048



ES13053



ES13064



ES13072



ES13087



ES16003



ES17027



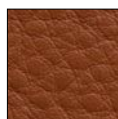
ES22024



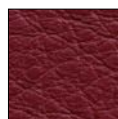
ES22030



ES33001



ES33004



ES35126



ES43054



ES43083



ES44005



ES44012



ES44026



ES45018



ES45050



ES45065



ES53032



ES54035



ES55002



ES57349



ES71017



ES75010



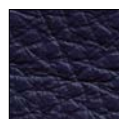
ES76025



ES77026



ES77030



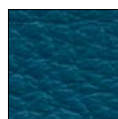
ES77127



ES77158



ES78023



ES87088



ES88005



ES88020



ES88033



CHROME FREE



kvadrat

Canvas



Kvadrat's Canvas has been
awarded the EU Ecolabel



Arper grade
CHAIRS: D

Arper grade
SOFAS: F

kvadratCava 3
(EU Ecolabel)

Kvadrat's Cava 3
has been awarded
the EU Ecolabel

Arper grade
CHAIRS: C

Arper grade
SOFAS: C

	CA00124	CA00132	CA00142	CA00153	CA00162	
CA00212	CA00184	CA00192	CA00223	CA00232	CA00344	
CA00364	CA00373	CA00414	CA00422	CA00432	CA00442	CA00453
CA00464	CA00543	CA00552	CA00563	CA00633	CA00642	CA00652
CA00662	CA00673	CA00683	CA00722	CA00732	CA00742	CA00752
CA00763	CA00772	CA00782	CA00793	CA00794	CA00833	CA00843
CA00852	CA00862	CA00872	CA00883	CA00932	CA00953	CA00962
CA00972	CA00982	CA00993				

kvadrat

Clara 2



Kvadrat's Clara 2
has been awarded
the EU Ecolabel

Arper grade
CHAIRS: D

Arper grade
SOFAS: E



kvadrat

Divina 3

Arper grade
CHAIRS: G

Arper grade
SOFAS: I

						
	DV00106	DV00154	DV00173	DV00181	DV00191	
						
	DV00224	DV00236	DV00246	DV00334	DV00346	
						
DV00356	DV00376	DV00384	DV00393	DV00426	DV00444	DV00462
						
DV00526	DV00536	DV00542	DV00552	DV00562	DV00584	DV00623
						
DV00626	DV00636	DV00652	DV00662	DV00666	DV00676	DV00684
						
DV00686	DV00691	DV00692	DV00696	DV00712	DV00742	DV00756
						
DV00782	DV00791	DV00793	DV00826	DV00836	DV00846	DV00856
						
DV00876	DV00886	DV00893	DV00922	DV00936	DV00944	DV00956
						
DV00966	DV00984					

kvadrat

Divina Melange 2

Arper grade
CHAIRS: G

Arper grade
SOFAS: I



kvadrat

Divina MD

Arper grade
CHAIRS: G

Arper grade
SOFAS: I

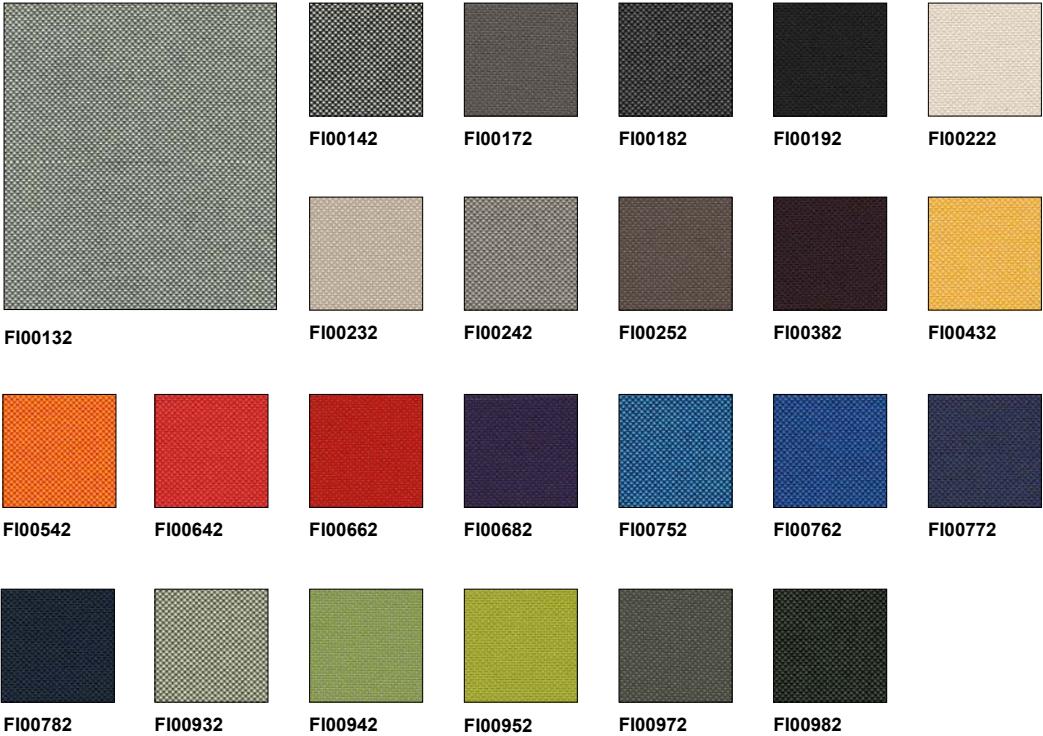


kvadrat

Field

Arper grade
CHAIRS: **B**

Arper grade
SOFAS: **C**



kvadratHallingdal 65
(EU Ecolabel)

Kvadrat's Hallingdal 65
has been awarded the
EU Ecolabel

Arper grade
CHAIRS: G

Arper grade
SOFAS: G



kvadrat

Jumper 3

Utilizzo all'esterno:
solo per Pix Outdoor

Outdoor use:
only for Pix Outdoor

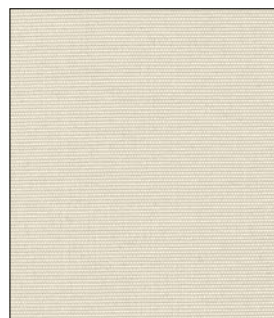
Außeneinsatz:
nur für Pix Outdoor

Utilisation en extérieur:
seulement pour Pix Outdoor

Uso en exteriores:
sólo para Pix Outdoor

Arper grade
CHAIRS: D

Arper grade
SOFAS: D



JU00001



JU00002



JU00011



JU00013



JU00014



JU00016



JU00021



JU00023

kvadrat

Pause 4

Arper grade
CHAIRS: C

Arper grade
SOFAS: C



kvadrat

Pro 3

Arper grade
CHAIRS: E

Arper grade
SOFAS: E



kvadratRemix 2
(EU Ecolabel)

Kvadrat's Remix 2
has been awarded
the EU Ecolabel

Arper grade
CHAIRS: C

Arper grade
SOFAS: D

						
	RX00113 (*)	RX00133	RX00143	RX00152	RX00163	
						
RX00123	RX00173	RX00183	RX00223 (*)	RX00233	RX00242	
						
RX00252	RX00362	RX00373	RX00383	RX00393	RX00412	RX00422
						
RX00433	RX00443	RX00452	RX00543	RX00612	RX00632	RX00643
						
RX00653	RX00662	RX00672	RX00682	RX00692	RX00722	RX00733
						
RX00743	RX00753	RX00762	RX00773	RX00783	RX00842	RX00852
						
RX00873	RX00912	RX00923	RX00933	RX00942	RX00954	RX00962
						
RX00973	RX00982					

(*) RX00113 - RX00223: only for the cushions Owl, Lines, Pleats e Gego.

kvadrat
Revive 1

Arper grade
CHAIRS: **B**

Arper grade
SOFAS: **B**



kvadrat

Revive 2

Arper grade
CHAIRS: **B**

Arper grade
SOFAS: **B**



kvadrat

Savanna



SA00122



SA00152



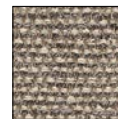
SA00192



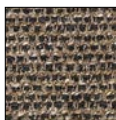
SA00202



SA00222



SA00242



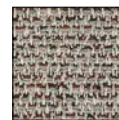
SA00262



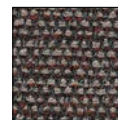
SA00292



SA00442



SA00622



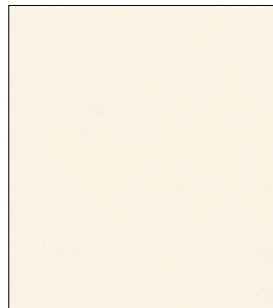
SA00672



SA00952

Arper grade
CHAIRS: GArper grade
SOFAS: G**kvadrat**

Scuba



SQ00001



SQ00002



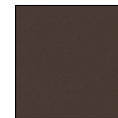
SQ00003



SQ00004



SQ00005



SQ00006



SQ00007



SQ00008



SQ00009



SQ00010



SQ00011



SQ00012



SQ00013



SQ00014



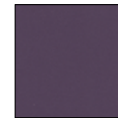
SQ00015



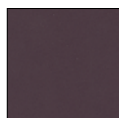
SQ00016



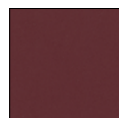
SQ00017



SQ00018



SQ00019



SQ00020



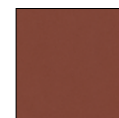
SQ00021



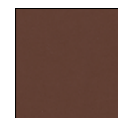
SQ00022



SQ00023



SQ00024



SQ00025

Arper grade
CHAIRS: EArper grade
SOFAS: G

Kvadrat

Steelcut Trio 2



Kvadrat's Steelcut Trio 2

has been awarded the

EU Ecolabel

Arper grade

CHAIRS: **G**

Arper grade

SOFAS: **H**



kvadrat

Steelcut 2



Kvadrat's Steelcut 2
has been awarded the
EU Ecolabel

Arper grade
CHAIRS: G

Arper grade
SOFAS: H



kvadrat

Sunniva 2

Arper grade
CHAIRS: G

Arper grade
SOFAS: I



kvadrat

Tempo

Arper grade
CHAIRS: E

Arper grade
SOFAS: E



kvadrat

Tonus 4

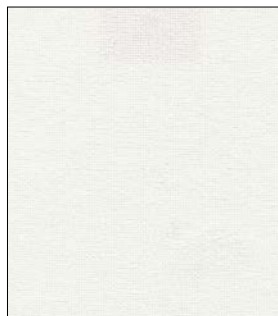
Arper grade
CHAIRS: F

Arper grade
SOFAS: G





Jet



JE00001



JE01001



JE01006



JE02010



JE02012



JE02024



JE03019



JE03030



JE03036



JE03090



JE04007



JE04017



JE04018

Arper grade
CHAIRS: AArper grade
SOFAS: A

JE04027



JE04028



JE04051



JE06007



JE06013



JE06014



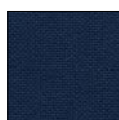
JE06056



JE06091



JE06095



JE06098



JE07014



JE07025



JE07034



JE07041



JE08001



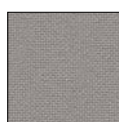
JE08009



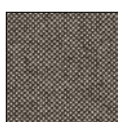
JE08017



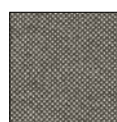
JE08033



JE08078



JE09108



JE09109



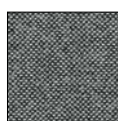
JE09110



JE09219



JE09281



JE09294



JE009301



JE09302



JE09304



JE09305



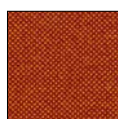
JE09401



JE09402



JE09403



JE09404



JE09501



JE09600



JE09601



JE09602



JE09603



JE09604



JE09605



JE09606



JE09607



JE09608



JE09609



JE09610



JE09701



JE09702



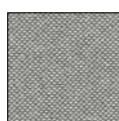
JE09703



JE09704



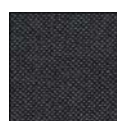
JE09803



JE09804



JE09805



JE09806



Style

Arper grade
CHAIRS: D

Arper grade
SOFAS: D



Standard contrast stitching
Cucitura a contrasto standard
Standard Kontrast Nähte
Surpiqûre standard à contrast
Costura contraste estándar



CT00120
Cucitura in ocra
Ochre stitching
Ockergelbe Nähte
Surpiqûre en Ocre
Ocre costura



CT00031
Cucitura in grigio scuro
Dark grey stitching
Dunkelgraue Nähte
Surpiqûre en gris foncé
Gris oscuro costura



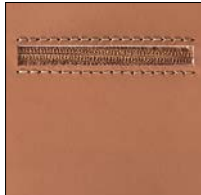
CT00040
Cucitura in nero
Black stitching
Schwarze Nähte
Surpiqûre en noir
Negro costura

Esempio di cerniere a contrasto su richiesta
Samples of contrast zippers available upon request
Beispiele für Reißverschlüsse in Kontrastfarbe auf Anfrage
Exemples pour fermetures éclair en couleur contraste sur demande
Cremallera contrastada sobre pedido



CT00450
Cerniera in marrone
Brown zip
Reißverschluss Braun
Soufflet marron
Marron cremallera

Esempio di cerniere tono su tono standard
Simple standard matching zip
Beispiel Standard Farbgleich
Reißverschluss
Élément décoratif standard ton sur ton
Muestra Cremallera estándar a tono



CT00100
Cerniera in marrone
Brown zip
Reißverschluss Braun
Soufflet marron
Marron cremallera



Istituito nel 1992, il marchio comunitario di qualità ecologica o Ecolabel, il cui logo è rappresentato da un fiore, è uno speciale sistema di certificazione creato per aiutare i consumatori europei a scegliere prodotti e servizi più ecologici e più rispettosi dell'ambiente.

Established in 1992, the EU Eco-label "Flower" is a unique certification scheme aimed to help European consumers distinguish greener, more environmentally friendly, products and services.

Hinter der "Blume", dem 1992 ins Leben gerufenen EU-Umweltzeichen, steckt ein einzigartiges Zertifizierungssystem, das dem europäischen Verbraucher das Erkennen umweltfreundlicherer Produkte und Dienstleistungen erleichtern soll.

Établi en 1992, le label écologique de l'EU symbolisé par la "Fleur" est un système d'homologation unique destiné à aider les consommateurs européens à discerner les produits et services plus verts et plus favorables à l'environnement.

Creada en 1992, la etiqueta ecológica de la UE, también conocida como "la flor", constituye un sistema de certificación único, cuyo objetivo es ayudar a los consumidores europeos a identificar los productos y servicios más ecológicos y respetuosos del medio ambiente.

Maintenance advice

Table-tops and seat panels/shells made of wood, polypropylene, polyethylene or polyurethane

May be cleaned with a damp, soft cloth or sponge using lukewarm water. Neutral diluted detergent may also be used in lukewarm water. Strong detergents which contain bleach or which have an abrasive effect (such as scouring creams) should be avoided at all costs.

Laminate surfaces

May be cleaned with strong products such as normal detergents for domestic surfaces diluted in lukewarm water, provided that they are not abrasive and do not contain acids or bleach. Avoid sponges and scourers made from synthetic fibres or metal which may leave permanent scratches on the surfaces.

Chrome, anodised or lacquered surfaces

May be cleaned with strong products such as normal detergents for domestic surfaces diluted in lukewarm water, provided that they are not abrasive and do not contain acids or bleach. Avoid sponges and scourers made from synthetic fibres or metal which may leave permanent scratches on the surfaces. The products must be properly rinsed so that traces of the detergents do not spoil the special finish by causing the surface to turn opaque or to oxidise. After washing, dry it with a chamois leather. Polishes for chromed or lacquered finishes are not recommended: they should be used with caution and only by experts since the abrasive action may irreparably damage the surfaces.

Fabric

May be treated using damp brushes, possibly with light detergent or vinegar, both of which should be very dilute. Alternatively, it can be drycleaned using appropriate products. For best care and maintenance results please follow the indications given by the ENI-EN-ISO 3758 symbols on the relevant fabric information sheet.

Hard leather grade 1, hard leather grade 2 and soft leather

Must not be cleaned with water as this may leave marks. It is better to use quality products for cleaning leather, carefully following the instructions of the manufacturer of the cleaning product. In case of doubt test the product on a small area which is normally hidden from view in order to check the result, waiting at least 24 hours to allow any possible problems to develop.

Stainless steel

Clean regularly (every 15 to 20 days) with a soft damp cloth or with special products for cleaning stainless steel available on the market.

Faux leather

May be cleaned with a damp, soft cloth using lukewarm water.

I colori visualizzati sono puramente indicativi e possono variare rispetto alla realtà. Rivolgersi ad Arper o al proprio rivenditore di fiducia per ricevere un campione colore o per maggiori informazioni.

Colours shown are used for reference only and may look different in reality. Please contact Arper or your retailer to receive a colour sample or more information.

Bei den angezeigten Farben handelt es sich um reine Farbbeispiele, die von der Realität abweichen können.
Für Farbmuster und nähere Informationen wenden Sie sich bitte an Arper oder an den Händler Ihres Vertrauens.

La reproduction photographique des couleurs n'est que purement indicative et peut être différente de la réalité. S'adresser à Arper ou à votre revendeur de confiance pour recevoir un échantillon de couleur ou pour de plus amples informations.

Los colores visualizados son meramente indicativos y pueden diferir de la realidad. Para recibir una muestra del color o para más información, contactar a Arper o a su distribuidor de zona.

Arper SPA si riserva di apportare modifiche e/o migliorie di carattere tecnico ed estetico ai propri modelli e prodotti in qualsiasi momento e senza preavviso.
Per maggiori informazioni visitate il sito www.arper.com

Arper SPA reserves the right to make modifications and improvements of a technical or aesthetic nature to the products at any time without notice.
For further information, please visit www.arper.com

Arper SPA
Via Lombardia 16
31050 Monastier di Treviso (TV)
Italia

T +39 0422 7918
F +39 0422 791800
info@arper.com
www.arper.com

Commerciale Italia
T +39 0422 791905 / 791872
F +39 0422 791900
commerciale@arper.com

Export Office
T +39 0422 791902 / 4 / 6 / 7 / 8 / 9 / 16 / 17 / 27
F +39 0422 791900
sales@arper.com

Europe:

London — UK
11 Clerkenwell Road
London EC1M 5PA
T +44 (0) 20 7253 0009
london@arper.com

Cologne — Germany
Design Post Köln
Deutz-Mülheimer-Str. 22a
50679 Cologne
T +49 221 690 650
info@designpost.de

Milan — Italy
Via Pantano 30
20122 Milan
T +39 02 89093865
milano@arper.com

Stockholm — Sweden
Banérgatan 10
Stockholm
sweden@arper.com

Oslo — Norway
Drammensveien 130
0277 Oslo
T +47 930 59 226
cj@nextlevel-design.com

Amsterdam — The Netherlands
Design Post
Cruquiusweg 111-P
1019 AG Amsterdam
T +31 (0)20 705 1555
showroom@beltane.nl

Copenhagen — Denmark
Pakhus 48
Klubbiensvej 26,
DK-2150 Nordhavn
T +45 71 99 63 88
info@hornbakco.com

Worldwide:

New York — USA
476 Broadway, Suite 2F
PO Box 1683
NY 10013 New York
T +1 (212) 647 8900
infousa@arper.com

Dubai — UAE
U-Bora Towers - Unit 1901
Business Bay
Dubai
T +971 509144800
infome@arper.com

Chicago — USA
The Merchandise Mart
Space#339 - 3rd Floor
Chicago
USA
T +1 (212) 647 8900 x1
infousa@arper.com