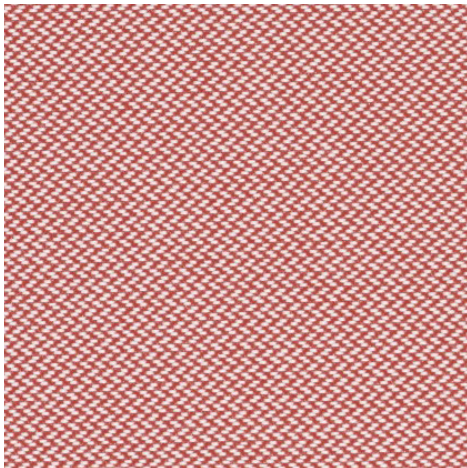
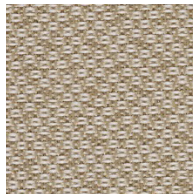




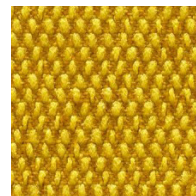
Messenger 4  
Revive 1  
Revive 2



Revive 1 524



Revive 2 223



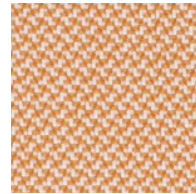
Messenger 4 054



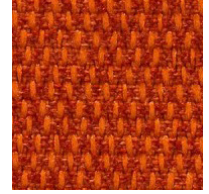
Revive 2 423



Messenger 4 079



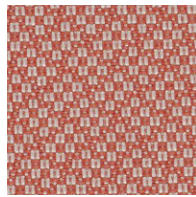
Revive 1 534



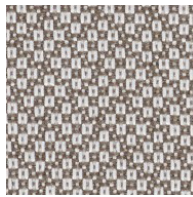
Messenger 4 071



Revive 2 633



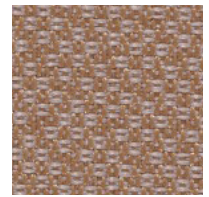
Revive 2 523



Revive 2 323



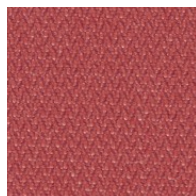
Revive 1 224



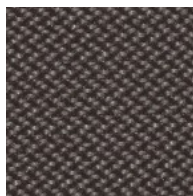
Revive 2 433



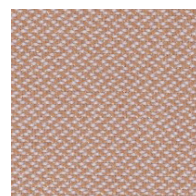
Messenger 4 025



Revive 1 664



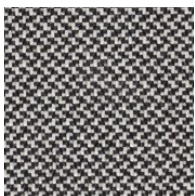
Revive 1 274



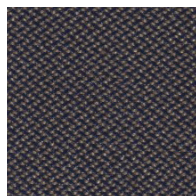
Revive 1 434



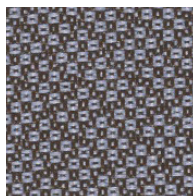
Revive 2 453



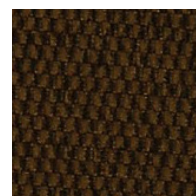
Revive 1 164



Revive 1 284



Revive 2 173



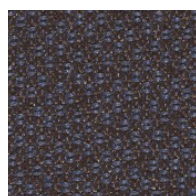
Messenger 4 006



Revive 1 454



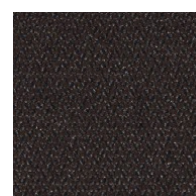
Revive 2 163



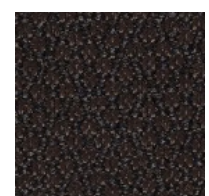
Revive 2 373



Revive 1 764

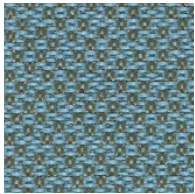


Revive 1 384

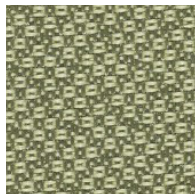


Revive 2 383

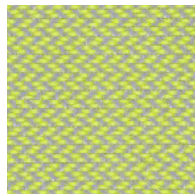




Revive 2 833



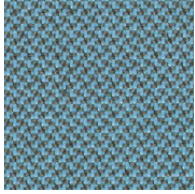
Revive 2 933



Revive 1 914



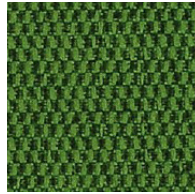
Messenger 4 060



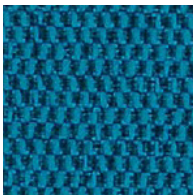
Revive 1 834



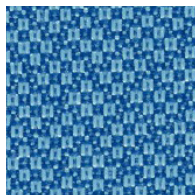
Messenger 4 061



Messenger 4 045



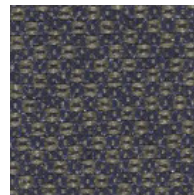
Messenger 4 041



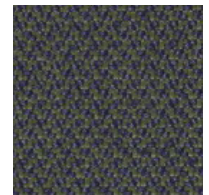
Revive 2 753



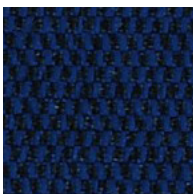
Messenger 4 087



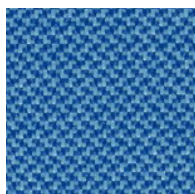
Revive 2 973



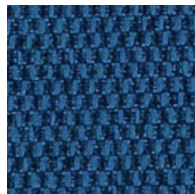
Revive 1 974



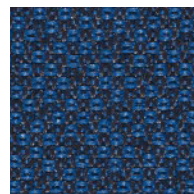
Messenger 4 038



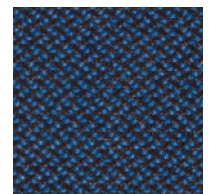
Revive 1 754



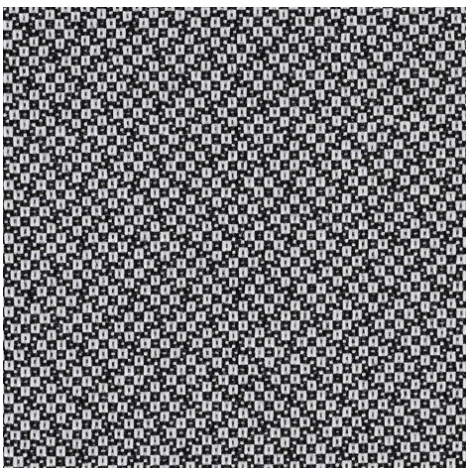
Messenger 4 040



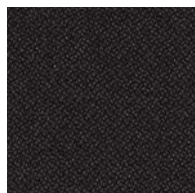
Revive 2 773



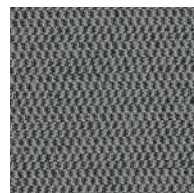
Revive 1 774



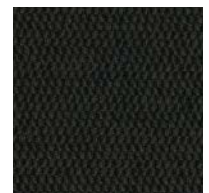
Revive 2 153



Revive 1 194



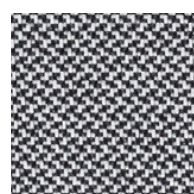
Messenger 4 031



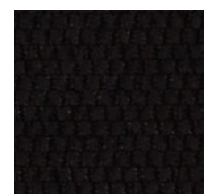
Messenger 4 008



Revive 1 144



Revive 1 154



Messenger 4 029

## REVIVE 1 designed by Georgina Wright

Composition: 100% poliester FR recycled  
Width: 140 cm  
Weight: 430g

### TEST:

#### Flame resistance:

UNI 9175 1IM  
ÖNORM B1/Q1

#### Colour fastness to light:

Class 5-7 (ISO 1-8)



fireproof / ignifugo

## REVIVE 2 designed by Georgina Wright

Composition: 100% poliester FR recycled  
Width: 140 cm  
Weight: 420g

### TEST:

#### Flame resistance:

UNI 9175 1IM  
ÖNORM B1/Q1

#### Colour fastness to light:

Class 5-7 (ISO 1-8)



fireproof / ignifugo

## MESSENGER 4 designed by Maharam

Composition: 78% recycled polyester,  
15% polyester, 7% nylon  
Width: 137 cm  
Weight: 440g/lin.m

### TEST:

#### Abrasion (EN ISO 12947)

30.000 rubs Martindale

#### Pilling (EN ISO 12945)

Note 3-4

#### Lightfastness (ISO 105-B02):

Note 6-7

#### Flame resistance

Cal. Tech. Bull. 117, Sec. E  
IMO A.652(16) when back coated

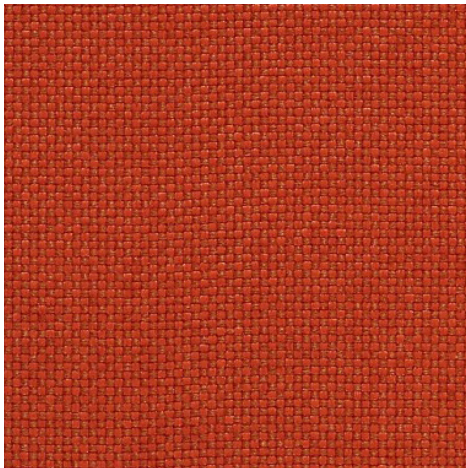


fireproof / ignifugo

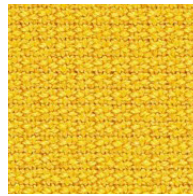


Cava 3  
Clara 2  
Field  
Remix 2

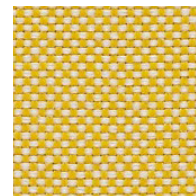




Field 662



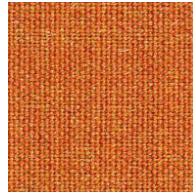
Cava 3 453



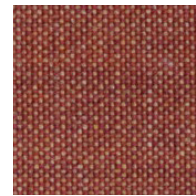
Field 432



Remix 2 223



Remix 2 543



Remix 2 632



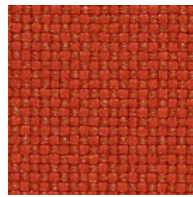
Clara 2 423



Cava 3 652



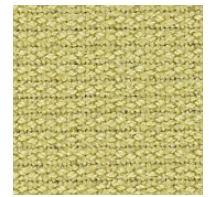
Remix 2 662



Field 642



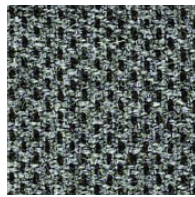
Remix 2 252



Cava 3 414



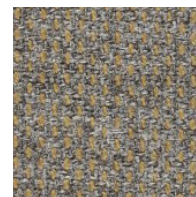
Remix 2 373



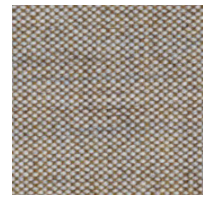
Clara 2 384



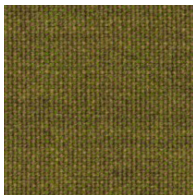
Remix 2 233



Clara 2 273



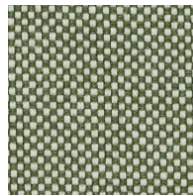
Remix 2 242



Remix 2 412



Cava 3 883



Field 932



Cava 3 872



Remix 2 933

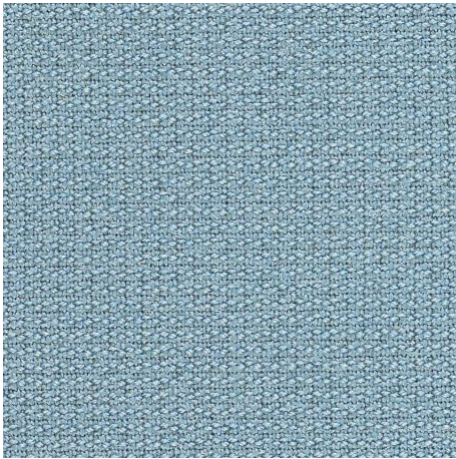


Cava 3 972

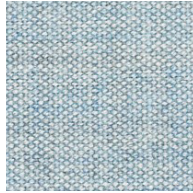


Clara 2 933





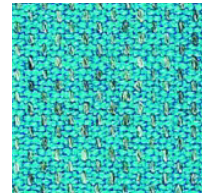
Cava 3 763



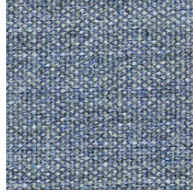
Remix 2 823



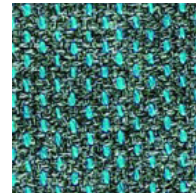
Cava 3 852



Clara 2 888



Remix 2 733



Clara 2 884



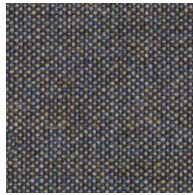
Cava 3 184



Cava 3 862



Remix 2 762



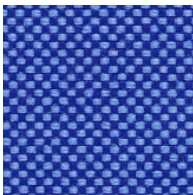
Remix 2 852



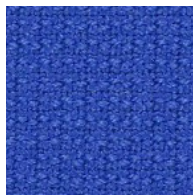
Remix 2 773



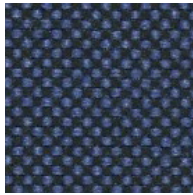
Clara 2 983



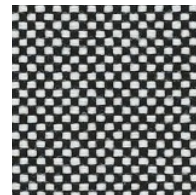
Field 762



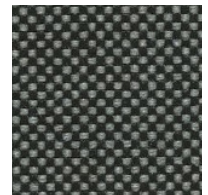
Cava 3 742



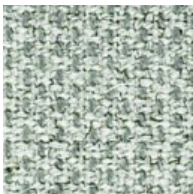
Field 782



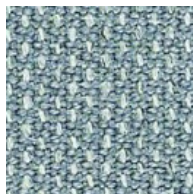
Field 142



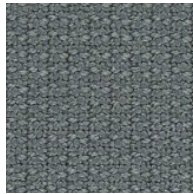
Field 182



Clara 2 144



Clara 2 148



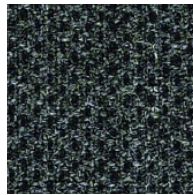
Cava 3 142



Field 232



Remix 2 173



Clara 2 188



Remix 2 123

**Field** designed by Alfredo Häberli

Composition: 100% Trevira CS  
Width: 140cm  
Weight: 430 g/lin.m

**TEST:**

Abrasion (EN ISO 12947):  
100.000 rubs Martindale

Pilling (EN ISO 12945):  
Note 4-5

Lightfastness (ISO 105-B02):  
Note 5-7

**Flame resistance**

EN 1021-1/2  
BS 5852, ignition source 5  
DIN 4102, B1  
Önorm B1/Q1  
NF P 92 507 M1  
UNI 9177, classe 1  
US Cal. Tech. Bull. 117, Sec. E  
FAR 25.853

**Clara 2** designed by Anne Birgitte Hansen

Composition: 92% new wool, 8% nylon  
Width: 138cm  
Weight: 400 g/lin.m

**TEST:**

Abrasion (EN ISO 12947):  
80.000 rubs Martindale

Pilling (EN ISO 12945):  
Note 4

Lightfastness (ISO 105-B02):  
Note 5-7

**Flame resistance**

EN 1021-1/2  
BS 5852, ignition source 2-3  
DIN 4102 B2  
NF D 60 013  
UNI 9175 1IM  
US Cal. Tech. Bull. 117, Sec. E  
NFPA 260  
IMO A.652(16)

With flame retardant treatment:  
BS 5852 Crib 5

No use of brominated flame retardants

**Cava 3** designed by Anne Gry

Composition: 90% new wool, 10% nylon  
Width: 135 cm  
Weight: 460 g/lin.m

**TEST:**

Abrasion (EN ISO 12947):  
80.000 rubs Martindale

Pilling (EN ISO 12945):  
Note 3

Lightfastness (ISO 105-B02):  
Note 5-7

**Flame resistance**

EN 1021-1 / 2  
BS 5852, ignition source 2-3  
Önorm B1/Q1  
NF D 60 013  
UNI 9175 1IM  
Cal. Tech. Bull. 117, Sec. E  
AS/NZS 1530.3  
AS/NZS 3837, Class 2  
IMO A.652(16)

Crib 5, B2 and M2 when flame protected  
No use of brominated flame retardants

**Remix 2** designed by Giulio Ridolfo

Composition: 90% new wool, 10% nylon  
Width: 138cm  
Weight: 415 g/lin.m

**TEST:**

Abrasion (EN ISO 12947):  
100.000 rubs Martindale

Pilling (EN ISO 12945):  
Note 3-4

Lightfastness (ISO 105-B02):  
Note 5-7

**Flame resistance**

EN 1021-1/2  
BS 5852, ignition source 2-3  
Önorm B1/Q1  
NF D 60 013  
UNI 9175, 1IM  
AS/NZS 3837 class 2  
Cal. Tech. Bull. 117, Sec. E  
IMO A.652(16)

Crib 5 and B2 when flame protected  
No use of brominated flame retardants



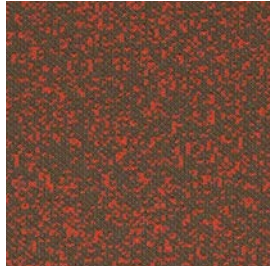




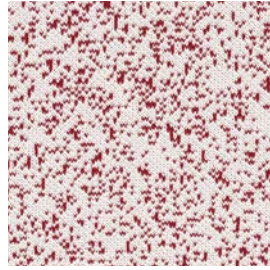
Galaxy  
Max Knit  
Moraine  
Nadir  
Nebula



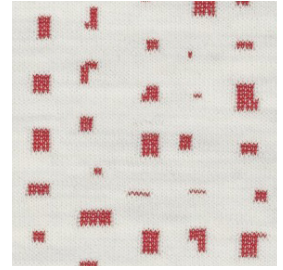
Max Knit 923



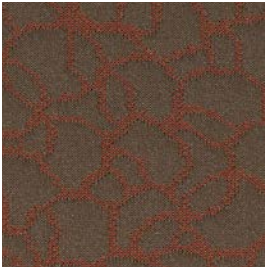
Galaxy 548



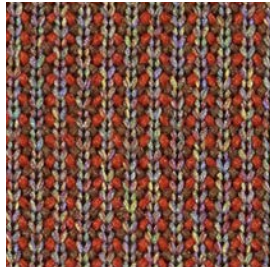
Galaxy 608



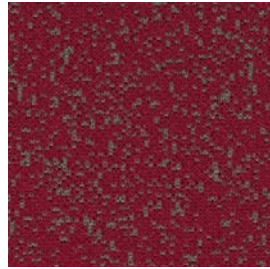
Moraine 120



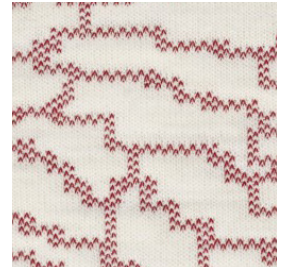
Nadir 242



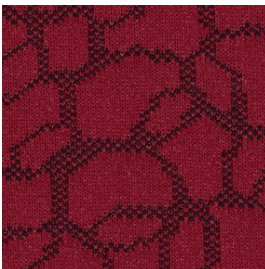
Max Knit 573



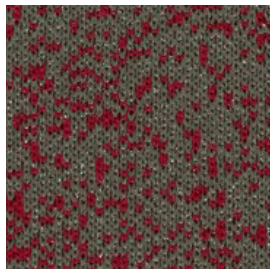
Galaxy 648



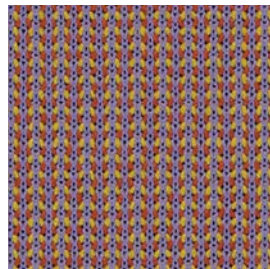
Nebula 126



Nadir 542



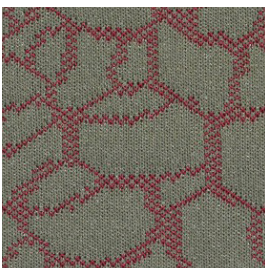
Galaxy 978



Max Knit 543



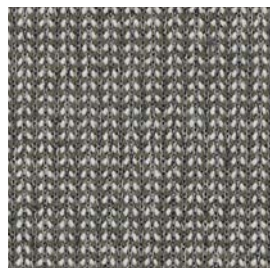
Moraine 600



Nadir 972



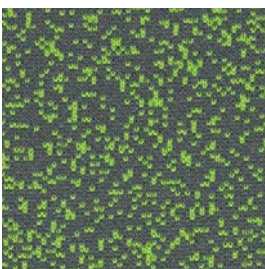
Nebula 956



Max Knit 143



Max Knit 243



Galaxy 948



Nadir 942



Moraine 900

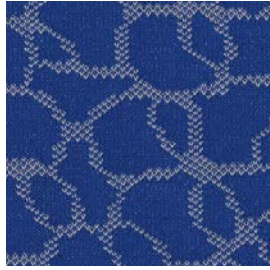


Max Knit 293

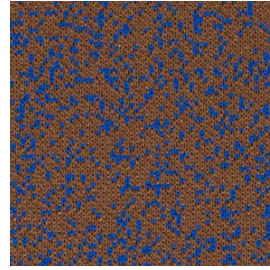




Moraine 110



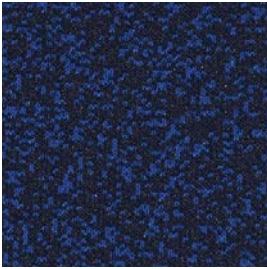
Nadir 742



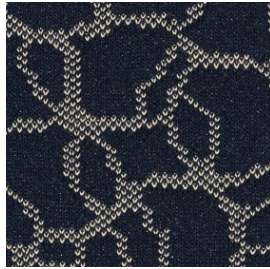
Galaxy 348



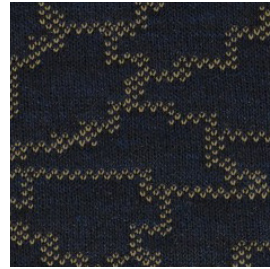
Moraine 700



Galaxy 778



Nadir 792



Nebula 776



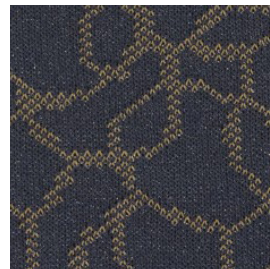
Max Knit 773



Nebula 786



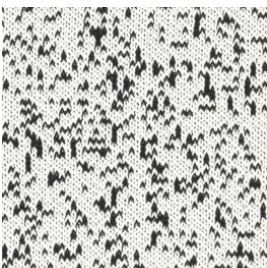
Galaxy 298



Nadir 182



Galaxy 248



Galaxy 108



Moraine 150



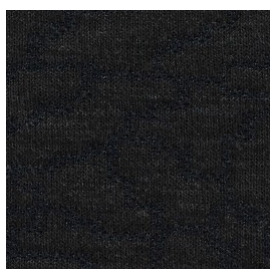
Max Knit 173



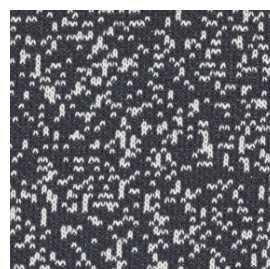
Nadir 142



Moraine 140



Nebula 186



Galaxy 178



Moraine 180

**Nebula** designed by **Alfredo Häberli**

**Composition:** 17% new wool,  
13% polyester FR, 70% polyester  
**Width:** 170cm  
**Weight:**1020 g/lin.m

**TEST:**

**Abrasion (EN ISO 12947):**  
20.000 Martindale rubs

**Pilling (EN ISO 12945):**  
Note 4-5

**Lightfastness (ISO 105-B02):**  
Note 5-7

**Flame resistance**  
EN 1021-1/2  
BS 5852 part 1  
US Cal. Tech. Bull. 117  
IMO A.652(16)  
With flame retardant treatment  
BS 5852 Crib 5

No use of brominated flameretardants



**Moraine** designed by **Ronan and Erwan Bouroullec**

**Composition:** 19% new wool,  
11% polyester FR, 70% polyester  
**Width:** 170 cm  
**Weight:** 1070 g/lin.m

**TEST:**

**Abrasion (EN ISO 12947):**  
35.000 Martindale rubs

**Pilling (EN ISO 12945):**  
Note 3

**Lightfastness (ISO 105-B02):**  
Note 1-2

**Flame resistance**  
EN 1021-1/2  
BS 5852, part 1  
IMO A.652 (16)  
Crb 5 when flameprotected

No use of brominated flameretardants



**Nadir** designed by **Alfredo Häberli**

**Composition:** 100% Polyester FR  
**Width:** 170 cm  
**Weight:** 860 g/lin.m

**TEST:**

**Abrasion (EN ISO 12947):**  
35.000 Martindale rubs

**Pilling (EN ISO 12945):**  
Note 4-5

**Lightfastness (ISO 105-B02):**  
Note 5-6

**Flame resistance**  
EN 1021-1/2  
DIN 4102 B1  
Önorm B1/Q1  
SN 198 898 5.2  
NF D 60 013  
NF P 92 507 M1  
UNI 9175 1IM  
IMO A.652 (16)

No use of brominated flameretardants





## Max Knit designed by Max Jenny

**Composition:** 63% Polyester fr,  
37% Polyester  
**Width:** 180cm  
**Weight:** 700 g/lin.m

### TEST:

**Abrasion (EN ISO 12947):**  
60.000 Martindale rubs

**Pilling (EN ISO 12945):**  
Note 3-4

**Lightfastness (ISO 105-B02):**  
Note 6-7

**Flame resistance**  
BS 5852 Crib 5 with treatment  
BS 5852 part 1  
DIN 4102 B1  
EN 1021-1/2  
IMO A.652(16)  
ÖNORM B1/ Q1  
SN 198 898 5.2  
UNI 9175 1IM



## Galaxy designed by Alfredo Häberli

**Composition:** 100% Polyester fr  
**Width:** 175 cm  
**Weight:** 760 g/lin.m

### TEST:

**Abrasion (EN ISO 12947):**  
45.000 Martindale rubs

**Pilling (EN ISO 12945):**  
Note 5

**Lightfastness (ISO 105-B02):**  
Note 5-6

**Flame resistance**  
EN 1021-1/2  
DIN 4102 B1  
Önorm B1/Q1  
NF P 91 507 M1  
UNI 9175 1IM  
No use of brominated flameretardants



fireproof / ignifugo

## Gravel designed by Ronan & Erwan Bouroullec

**Composition:** 100% Trevira CS  
**Width:** 140 cm  
**Weight:** 450 g/lin.m

### TEST:

**Abrasion (EN ISO 12947):**  
70.000 Martindale rubs

**Pilling (EN ISO 12945):**  
Note 4-5

**Lightfastness (ISO 105-B02):**  
Note 5-7

**Flame resistance**  
EN 1021-1/2  
BS 5852, ignition source 5  
DIN 4102, B1  
Önorm B1 / Q1  
French M1  
CSE RF 1/75/A, classe 1  
US Cal. Tech. Bull. 117  
FAR 25.853  
IMO A.652(16)

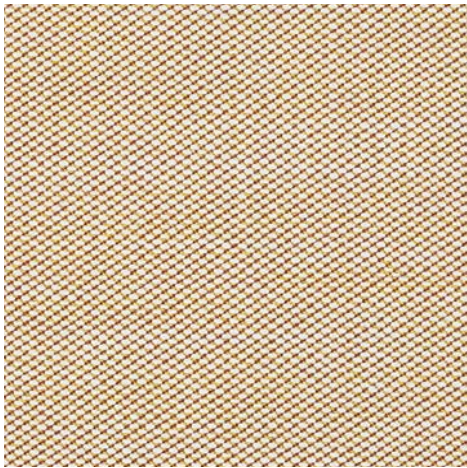


fireproof / ignifugo



Divina 3  
Divina Melange 2  
Divina MD  
Hallingdal 65  
Steelcut Trio 2  
Tonus 4





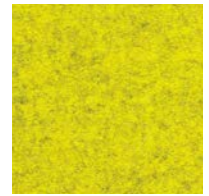
Steelcut Trio 2 413



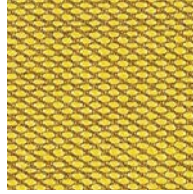
Divina MD 203



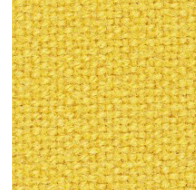
Tonus 4 135



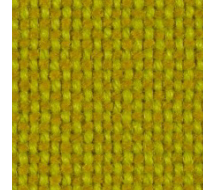
Divina Melange 2 421



Steelcut Trio 2 453



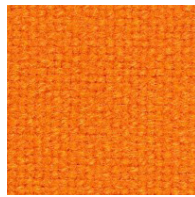
Tonus 4 440



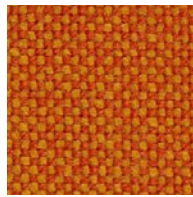
Hallingdal 65 420



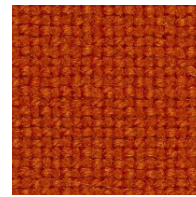
Tonus 4 608



Tonus 4 125



Hallingdal 65 590



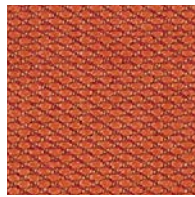
Hallingdal 65 600



Divina Melange 2 521



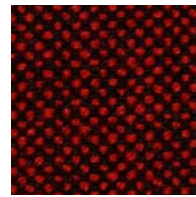
Divina 3 584



Steelcut Trio 2 533



Divina 3 623



Hallingdal 65 596



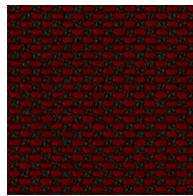
Tonus 4 130



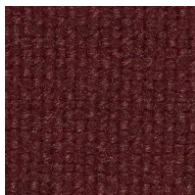
Divina 3 671



Divina MD 633



Steelcut Trio 2 665



Hallingdal 65 694



Steelcut Trio 2 645



Tonus 4 609

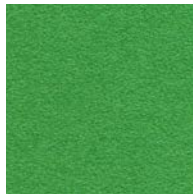


Hallingdal 65 674

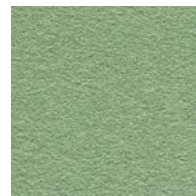




Divina MD 943



Divina 3 922



Divina 3 856



Divina MD 913



Divina Melange 2 971



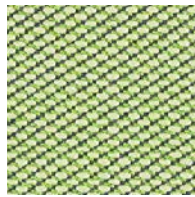
Divina MD 973



Tonus 4 619



Divina Melange 2 931



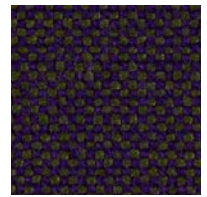
Steelcut Trio 2 933



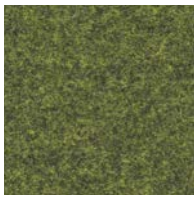
Divina Melange 2 260



Divina 3 984



Hallingdal 65 968



Divina Melange 2 471



Divina 3 334



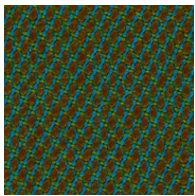
Hallingdal 65 270



Divina MD 453



Divina MD 353



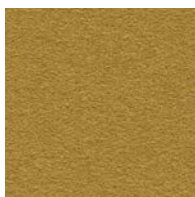
Steelcut Trio 2 965



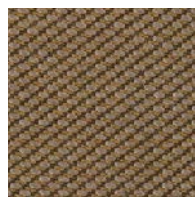
Hallingdal 65 224



Steelcut Trio 2 213



Divina 3 246



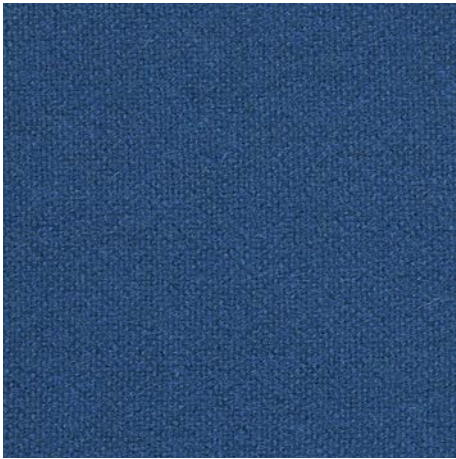
Steelcut Trio 2 235



Divina 3 346



Divina 3 393



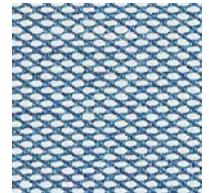
Tonus 4 132



Divina 3 712



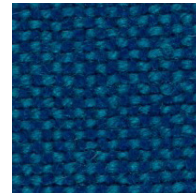
Divina Melange 2 731



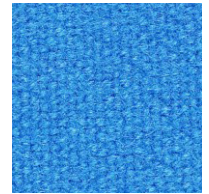
Steelcut Trio 2 733



Hallingdal 65 750



Hallingdal 65 810



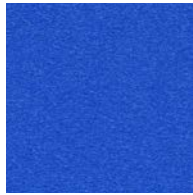
Tonus 4 129



Divina 3 154



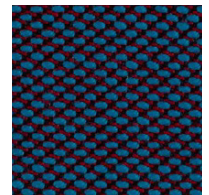
Tonus 4 210



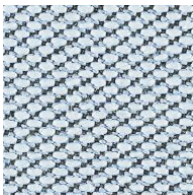
Divina 3 756



Divina 3 826



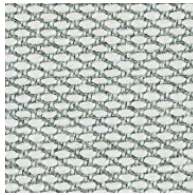
Steelcut Trio 2 745



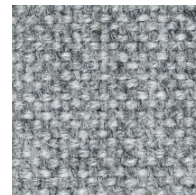
Steelcut Trio 2 713



Tonus 4 216



Steelcut Trio 2 113



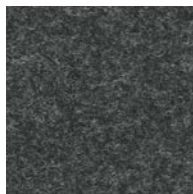
Hallingdal 65 130



Divina 3 191



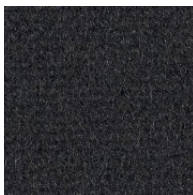
Divina 3 173



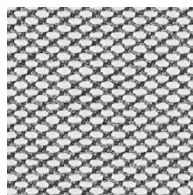
Divina Melange 2 180



Divina Melange 2 120



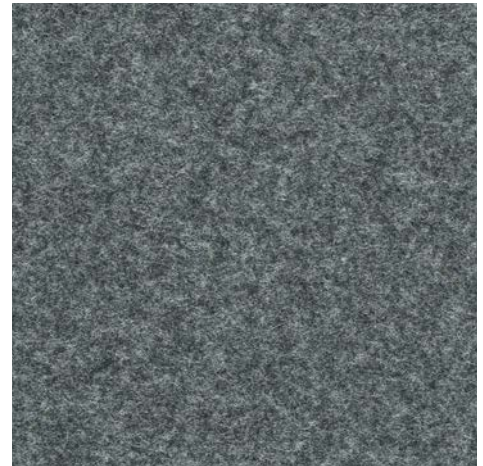
Tonus 4 128



Steelcut Trio 2 133



Divina 3 171



Divina Melange 2 170



**Divina 3** designed by Finn Sködt

Composition: 100% new wool  
Width: 150cm  
Weight: 840 g/lin.m

**TEST:**

Abrasion (EN ISO 12947):  
45.000 Martindale rubs

Pilling (EN ISO 12945):  
Note 3

Lightfastness (ISO 105-B02):  
Note 5-7

Flame resistance  
EN 1021-1 / 2  
BS 5852, ignition source 2-5  
DIN 4102 B2  
Önorm B1 / Q1  
NF D 60 013  
UNI 9175 1IM  
Cal. Tech. Bull. 117, Sec. E  
IMO A.652(16)

No use of brominated flame retardants



fireproof / ignifugo 0575/12

**Divina Melange 2** designed by Finn Sködt

Composition: 100% new wool  
Width: 150 cm  
Weight: 820 g/lin.m

**TEST:**

Abrasion (EN ISO 12947):  
45.000 Martindale rubs

Pilling (EN ISO 12945):  
Note 3

Lightfastness (ISO 105-B02):  
Note 5-7

Flame resistance  
EN 1021-1/2  
BS 5852, ignition source 2-5  
DIN 4102 B2  
Önorm B1/Q1  
UNI 9175/UNI 9176, 1IM  
US Cal. Tech. Bull. 117  
IMO A.652(16)

M2 when flame protected

No use of brominated flame retardants



fireproof / ignifugo 0575/12

**Divina MD** designed by Finn Sködt

Composition: 100% new wool  
Width: 150 cm  
Weight: 840 g/lin.m

**TEST:**

Abrasion (EN ISO 12947):  
45.000 Martindale rubs

Pilling (EN ISO 12945):  
Note 3

Lightfastness (ISO 105-B02):  
Note 5-7

Flame resistance  
EN 1021-1/2  
BS 5852, ignition source 2-5  
DIN 4102 B2  
Önorm B1/Q1  
UNI 9175/UNI 9176, 1IM  
US Cal. Tech. Bull. 117  
IMO A.652(16)

M2 when flame protected

No use of brominated flame retardants



fireproof / ignifugo 0575/12

## Hallingdal 65 designed by Nanna Ditzel

Composition: 70% new wool,  
30% viscose  
Width: 130 cm  
Weight: 795 g/lin.m

### TEST:

Abrasion (EN ISO 12947):  
100.000 Martindale rubs

Pilling (EN ISO 12945):  
Note 3

Lightfastness (ISO 105-B02):  
Note 5-7

### Flame resistance

EN 1021-1/2  
BS 5852, ignition source 2-5  
DIN 4102 B2  
Önorm B1/Q1  
UNI 9175/UNI 9176, 1IM  
US Cal. Tech. Bull. 117  
IMO A.652(16)

M2 when flame protected

No use of brominated flame retardants



fireproof / ignifugo

0575/12

## Tonus 3 designed by Nina Koppel

Composition: 90% new wool,  
10% Helanca  
Width: 130cm  
Weight: 635 g/lin.m

### TEST:

Abrasion (EN ISO 12947):  
+50.000 Martindale rubs

Pilling (EN ISO 12945):  
Note 3

Lightfastness (ISO 105-B02):  
Note 5-7

### Flame resistance

EN 1021-1/2  
BS 5852, ignition source 2-3  
Önorm B1/Q1  
Italian Class 1IM  
US Cal. Tech. Bull. 117  
IMO A.652(16)

Crib 5, B2 and M2 when flame protected

No use of brominated flame retardants



fireproof / ignifugo

0575/12

## Steelcut 2 designed by Dijkmeijer & Ridolfo

Composition: 90% new wool, 10% nylon  
Width: 140 cm  
Weight: 825 g/lin.m

### TEST:

Abrasion (EN ISO 12947):  
80.000 Martindale rubs

Pilling (EN ISO 12945):  
Note 3-4

Lightfastness (ISO 105-B02):  
Note 5-7

### Flame resistance

EN 1021-1/2  
BS 5852 part 1  
BS 5852 ignition source 2  
DIN 4102 B2  
Önorm B1/Q1  
NF D 60 013  
UNI 9175 1IM  
US Cal. Tech. Bull. 117  
AS/NZS 3837  
IMO A.652(16)

Crib 5 when flameprotected

No use of brominated flameretardants



fireproof / ignifugo

0575/12